

Finding Resident Rooms- A Guide for New Residents

Welcome! We're really glad you are finally here, congrats on making it this far and finding the House. Below are instructions to finding residents rooms. We're doing our best provide you an easy semi-contactless check in process which means you're about to find your way around the House.

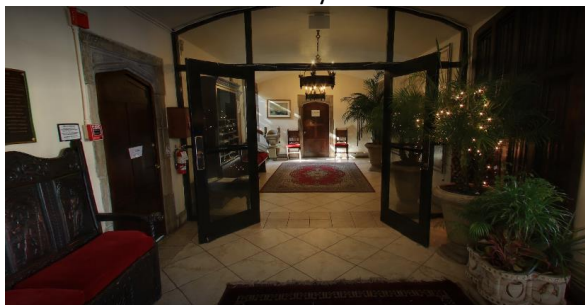
ISH-DC is a really unique building and you might need some help finding where your room is. My best advice is keep walking because everything is connected and you will eventually find your way!

But after a long flight all you want to do is find your room and get some rest so here's some help to find the room:

Finding Rooms 1-12 in the Main Building

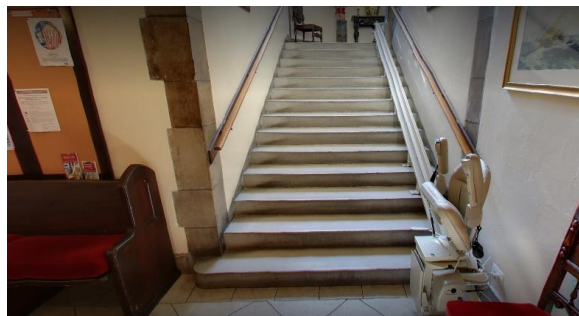
Step 1

From the lobby walk past the two black framed glass doors. This is what you should see:



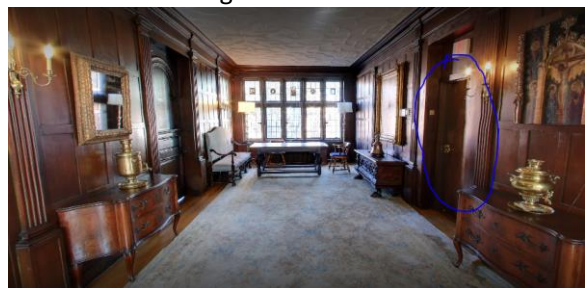
Step 2

Go up the concrete steps, which should be to your left:



Step 3

When you get to the top of the stairs this is what you should see. Find the second door to your right, the one with an exit sign above it...circled in blue.



Step 4

Head up the stair case and remember you are already on the 2nd floor.

Sorry we do not have any elevators/lifts.

Step 5

Room 8 is on floor 3 (walk up one flight, you will find a room with the number 8 on it)

Rooms 1-7 are located on floor 4 (walk up two flights, rooms 1-5 are to the right, rooms 6 and seven are to the left)

Rooms 9-12 are on floor 5 (walk up three flights, room 9-11 are to the right, room 12 is to the left)

Step 6

Once you arrive at the door labeled with your assigned room number, enter the room combination (provided inside the key envelope) and turn the knob toward the arrow. Here's a photo of the locks on most of our doors:

